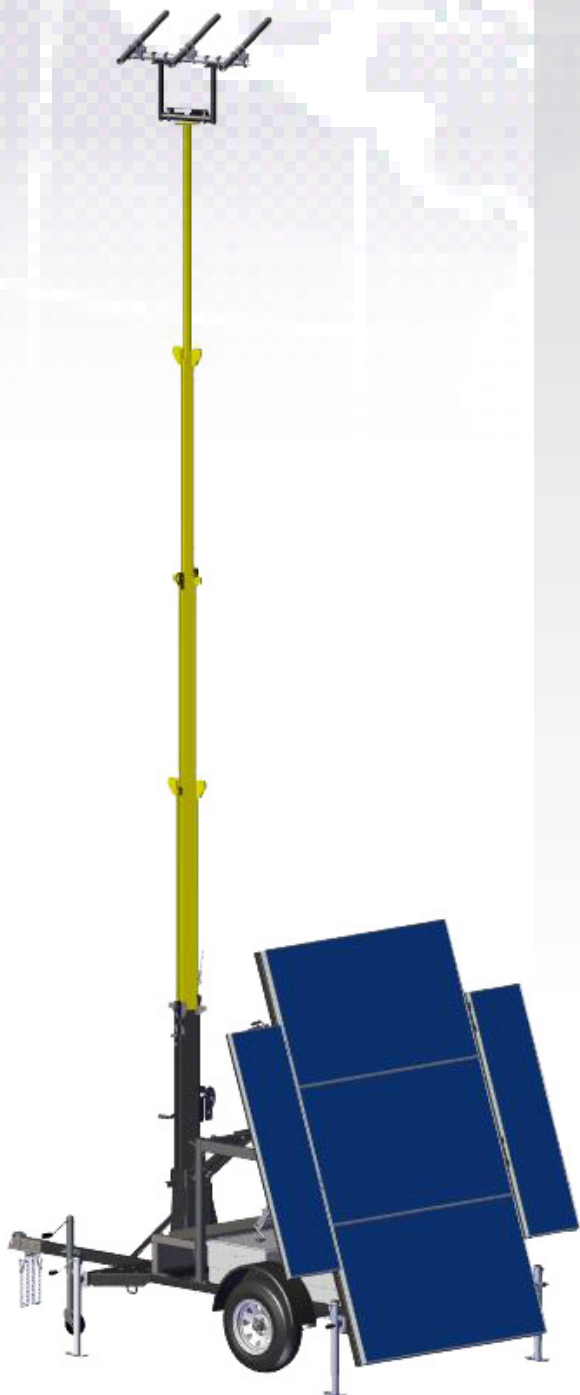


CT6 Mobile Communications Trailer

600, 900, 1200 & 1500 Watt Models

FEATURES

- › Custom engineered per load requirements
- › Solar budgeting per location criteria
- › Compact size for easy maneuvering
- › Easy to tow
- › Single person deployment
- › Vandal Resistant
- › Polyester Powder Coated components
- › Durable steel construction
- › 15" Wheels
- › 600, 900, 1200 or 1500 Watts Available
- › 2" Ball Hitch (Pintle Option)
- › T-Bar w/2" O.D. Poles for three antennas
- › Easy Disconnect switch for battery & solar
- › Maintenance Free AGM Batteries
- › 30' Mast w/Heavy Duty Hand Crank Winch
- › Tower Rotates 355 degrees from ground
- › Battery box accomodates 4 batteries



Fully Deployed Position



Folded / Travel Position

CT6 Specifications / Options

SPECIFICATIONS

TRAILER CONSTRUCTION

- › Frame constructed of square & rectangular steel tubing
- › 3 Tie Down Loops
- › 3,500 lb High Capacity Axle
- › Double Leaf Spring
- › ST205/75D15 trailer tire
- › Full wheel coverage fenders
- › 16 Ga Steel
- › Polyester Powder Coating
- › 4 - 2,000 lb rated stabilizers
- › Rear trailer frame reflective tape (Red/White)

DRAW BAR ASSEMBLY

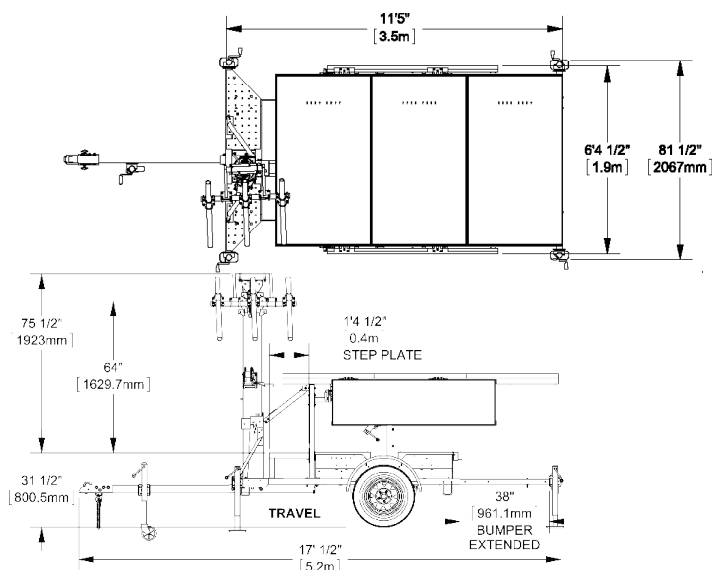
- › Straight tubular steel design, removal for shipping
- › Square Tubing 3" x 3/16" wall
- › Black Polyester Powder Coated
- › Extends 60" Beyond trailer frame
- › 2" Ball couple, SAE Class 2, 3,500 lb capacity
- › Proof coil tow chains w/latching hooks
- › Top-Wind swivel jacks, 2,000 lb capacity

TOWER ASSEMBLY

- › 30' telescoping rotating (355°) mast
- › T-Bar w/2" OD Poles for 3 Antennas, adjustable angle

WINCH

- › Hand winch raises mast to operating position
- › 1,500 lb (680kg) capacity
- › Safety friction brake prevents mast from falling
- › 1/4" dia. galvanized aircraft cable



Travel Positions

OPTIONS

POWER OPTIONS

- › 600, 900, 1200 or 1500 Watts Available
- › 2, 4, 6* or 8* - 200 Ahr AGM Batteries minimum
- › 2, 4* or 6* - 250 Ahr AGM Batteries minimum
- › *Second Battery Box for additional batteries
- › Fuel Cell
- › 24 VDC to 12 VDC Converter
- › Step up converter to 48 VDC available
- › External battery charger, 110 VDC to 24 VDC x 40A, includes smart charger
- › External DC power plug, direct connection to 24 VDC batteries

SOLAR CONTROLLERS

- › 30 Amp Solar Controller
- › 40 or 60 Amp Solar Controller + LCD Meter + LVD

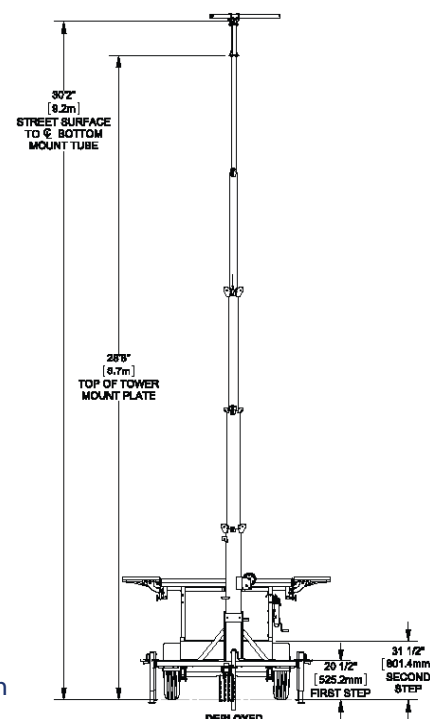
ADDITIONAL ACCESSORIES

- › Conspicuity Reflective Tape - 10'
- › NEMA Enclosure (cannot be used with second bat. box)
- › Spare Tire & Carrier

CONTROL BOX

- › Modular design enables ease of service
- › White Polyester Powder Coated
- › All cables clearly marked with black silkscreen

Deployed Position



DEPLOYED