

CT3 Mobile Communications Trailer

300 & 600 Watt Models

FEATURES

- › **Custom engineered** per load requirements
- › **Solar budgeting** per location criteria
- › **Compact size** for easy maneuvering
- › **Easy to tow**
- › **Single person deployment**
- › **Vandal Resistant**
- › **Polyester Powder Coated** components
- › **Durable steel** construction
- › **15" Wheels**
- › **300 or 600 Watts Available**
- › **2" Ball Hitch** (Pintle Option)
- › **T-Bar w/2" O.D. Poles** for three antennas
- › **Easy Disconnect** switch for battery & solar
- › **Maintenance Free AGM Batteries**
- › **20' Mast** w/Heavy Duty Hand Crank Winch
- › **Tower Rotates 355** degrees from ground
- › **Battery box** accomodates 4 batteries



Fully Deployed Position



Folded / Travel Position

CT3 Specifications / Options

SPECIFICATIONS

TRAILER CONSTRUCTION

- > Frame constructed of square & rectangular steel tubing
- > 3 Tie Down Loops
- > Double Leaf Spring
- > ST205/75D15 trailer tire
- > Full wheel coverage fenders
- > 16 Ga Steel
- > Polyester Powder Coating
- > 4 - 2,000 lb rated stabilizers
- > Rear trailer frame reflective tape (Red/White)

DRAW BAR ASSEMBLY

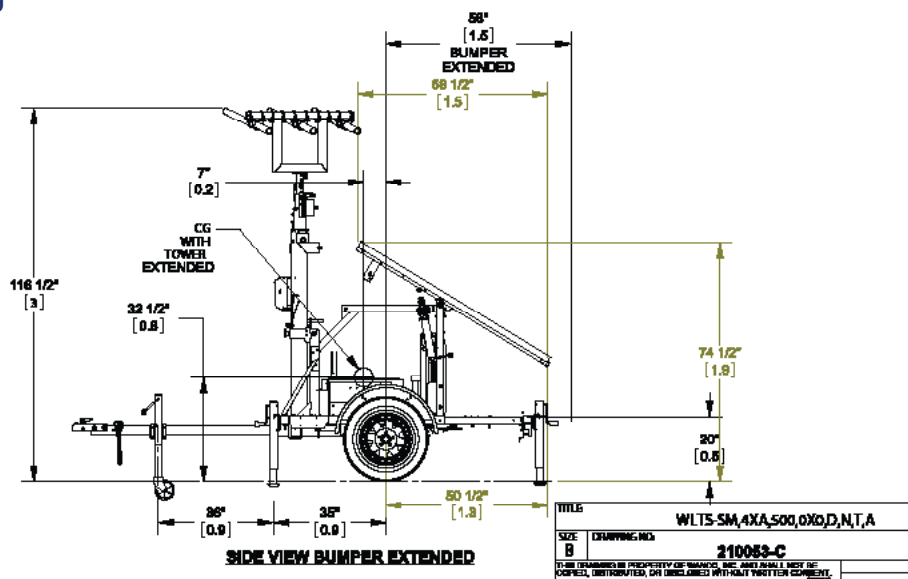
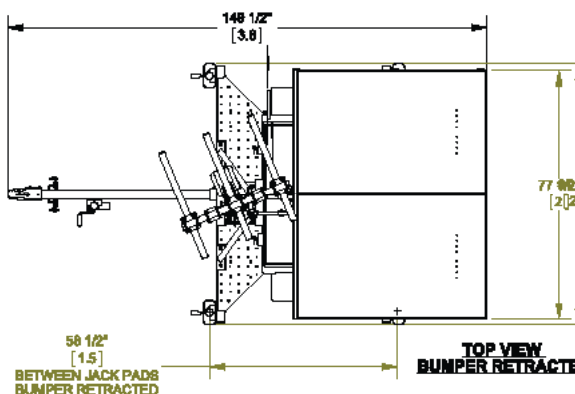
- > Straight tubular steel design, removal for shipping
- > Square Tubing 3" x 3/16" wall
- > Polyester Powder Coated
- > Extends 60" Beyond trailer frame
- > 2" Ball couple, SAE Class 2, 3,500 lb capacity
- > Proof coil tow chains w/latching hooks
- > Top-Wind swivel jacks, 2,000 lb capacity

TOWER ASSEMBLY

- > 20' telescoping rotating (355°) mast
- > T-Bar w/2" OD Poles for 3 Antennas, adjustable angle

WINCH

- > Hand winch raises mast to operating position
- > 1,500 lb (680kg) capacity
- > Safety friction brake prevents mast from falling
- > 1/4" dia. galvanized aircraft cable



OPTIONS

POWER OPTIONS

- > 300 or 600 Watts Available
- > 2, 4, 6 or 8 200Ahr batteries, 6 & 8 require second battery box or 4 - 200 Ahr AGM Batteries minimum
- > 24 VDC to 12 VDC Converter
- > Step down converter to 12 VDC available
- > External battery charger, 110 VDC to 24 VDC x 40A, includes smart charger
- > External DC power plug, direct connection to 24 VDC batteries

SOLAR CONTROLLERS

- > 30 Amp Solar Controller
- > 40 or 60 Amp Solar Controller + LCD Meter + LVD

ADDITIONAL ACCESSORIES

- > NEMA Enclosure (cannot be used with second bat. box)
- > Spare Tire & Carrier

CONTROL BOX

- > Modular design enables ease of service
- > White Polyester Powder Coated
- > All cables clearly marked with black silkscreen